



Department of Public Works  
**Engineering Division**  
 Robert F. Phillips, P.E., City Engineer  
 City-County Building, Room 115  
 210 Martin Luther King, Jr. Boulevard  
 Madison, Wisconsin 53703  
 Phone: (608) 266-4751  
 Fax: (608) 264-9275  
[engineering@cityofmadison.com](mailto:engineering@cityofmadison.com)  
[www.cityofmadison.com/engineering](http://www.cityofmadison.com/engineering)

**Deputy City Engineer**  
 Gregory T. Fries, P.E.  
**Deputy Division Manager**  
 Kathleen M. Cryan  
**Principal Engineer 2**  
 John S. Fahrney, P.E.  
 Christopher J. Petykowski, P.E.  
 Janet Schmidt, P.E.  
**Principal Engineer 1**  
 Christina M. Bachmann, P.E.  
 Mark D. Moder, P.E.  
 James M. Wolfe, P.E.  
**Facilities & Sustainability**  
 Bryan Cooper, Principal Architect  
**Land Information & Official Map Manager**  
 Eric T. Pederson, P.S.  
**Financial Manager**  
 Steven B. Danner-Rivers

January 18, 2022

NOTICE OF ADDENDUM  
 ADDENDUM NO. 2  
 CONTRACT NO. 8505

Cedar Street and Beld Street Assessment District – 2022

Revise and amend the contract document(s) for the above project as stated in this addendum, otherwise, the original document shall remain in effect.

**PROPOSAL**

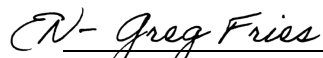
The quantity for 50227 has been added bid express to match the plans. See Bid Express.

Action	Bid Item	Description
ADD	50227	Utility Trench Patch Type IV

**PLANS:**

U-1 & U-2: Add 50227 Utility Trench Patch IV to the contract. Modified to indicate boundary of required Utility Trench Patch Type IV on Beld St. Added Note 5 and leader on U-1. Added Note 4 and leader on U-2.

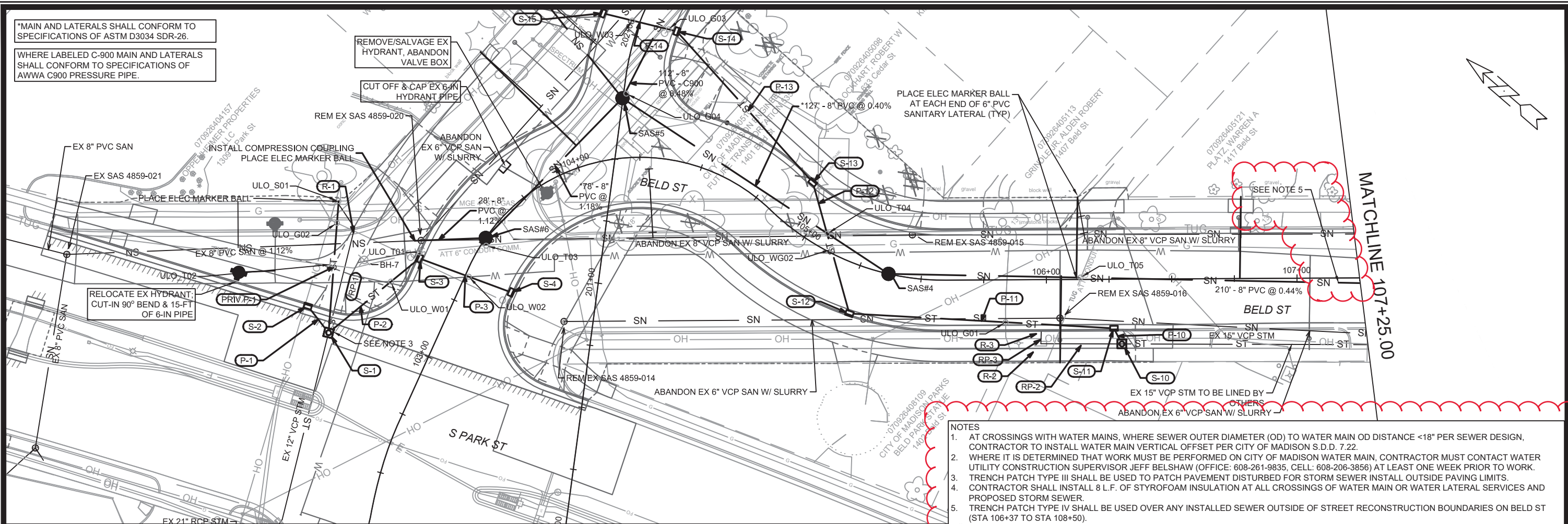
Sincerely,

 for RFP  
 Robert F. Phillips, P.E.  
 City Engineer

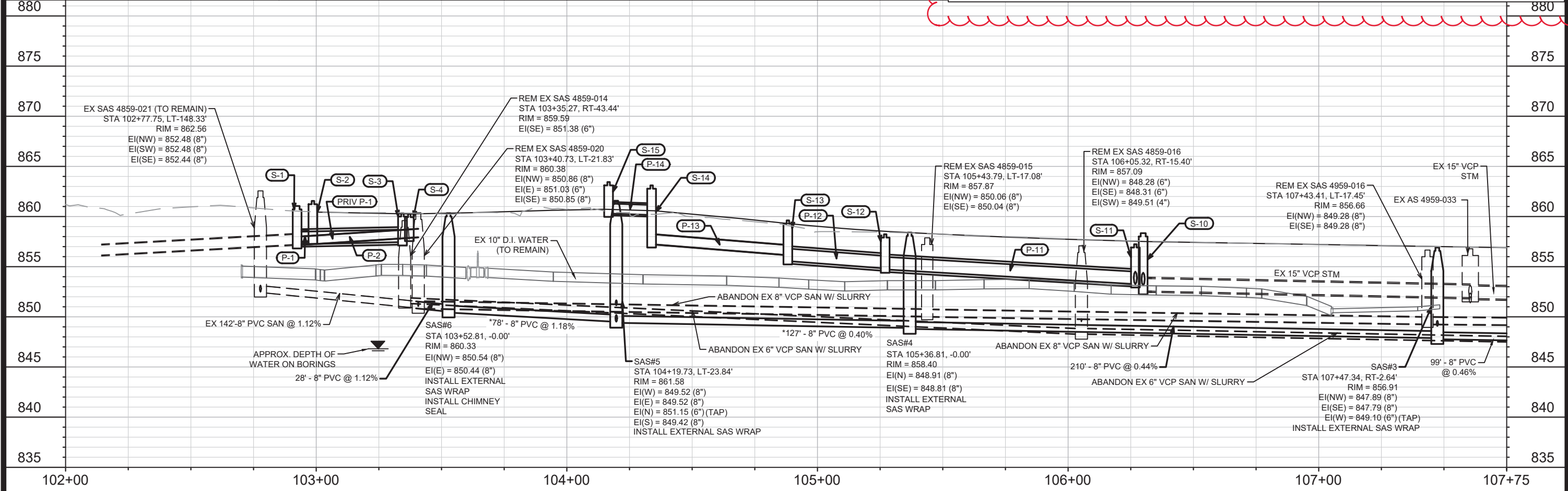
RFP:AJZ

\*MAIN AND LATERALS SHALL CONFORM TO SPECIFICATIONS OF ASTM D3034 SDR-26.

WHERE LABELED C-900 MAIN AND LATERALS SHALL CONFORM TO SPECIFICATIONS OF AWWA C900 PRESSURE PIPE.



- NOTES
1. AT CROSSINGS WITH WATER MAINS, WHERE SEWER OUTER DIAMETER (OD) TO WATER MAIN OD DISTANCE <18" PER SEWER DESIGN, CONTRACTOR TO INSTALL WATER MAIN VERTICAL OFFSET PER CITY OF MADISON S.D.D. 7.22.
  2. WHERE IT IS DETERMINED THAT WORK MUST BE PERFORMED ON CITY OF MADISON WATER MAIN, CONTRACTOR MUST CONTACT WATER UTILITY CONSTRUCTION SUPERVISOR JEFF BELSHAW (OFFICE: 608-261-9835, CELL: 608-206-3856) AT LEAST ONE WEEK PRIOR TO WORK.
  3. TRENCH PATCH TYPE III SHALL BE USED TO PATCH PAVEMENT DISTURBED FOR STORM SEWER INSTALL OUTSIDE PAVING LIMITS.
  4. CONTRACTOR SHALL INSTALL 8 L.F. OF STYROFOAM INSULATION AT ALL CROSSINGS OF WATER MAIN OR WATER LATERAL SERVICES AND PROPOSED STORM SEWER.
  5. TRENCH PATCH TYPE IV SHALL BE USED OVER ANY INSTALLED SEWER OUTSIDE OF STREET RECONSTRUCTION BOUNDARIES ON BELD ST (STA 106+37 TO STA 108+50).



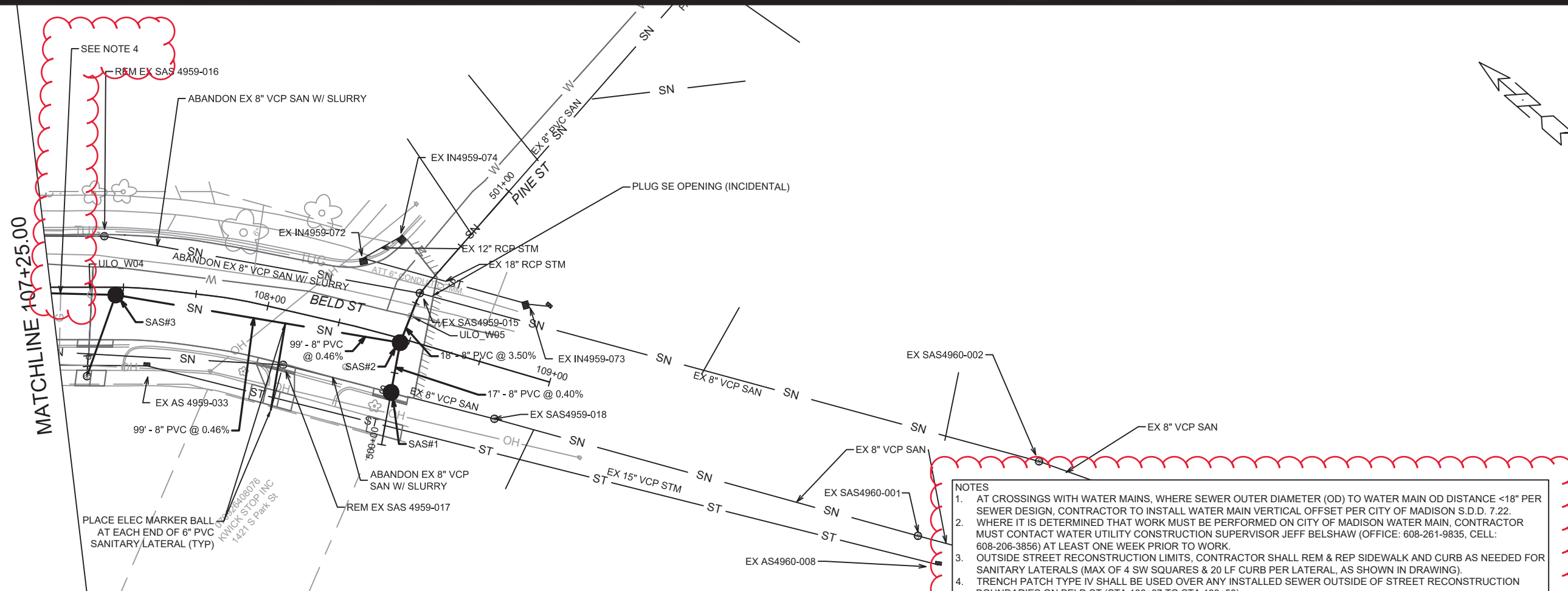
MARK	DATE	BY
ADDENDA 2	01/18/22	LES
REVISION	11/14/2022	12:07 PM
Scale:	1" = 40'	
11202		U-1

11202  
MADISON, WI  
8505  
CONTRACT NO.:

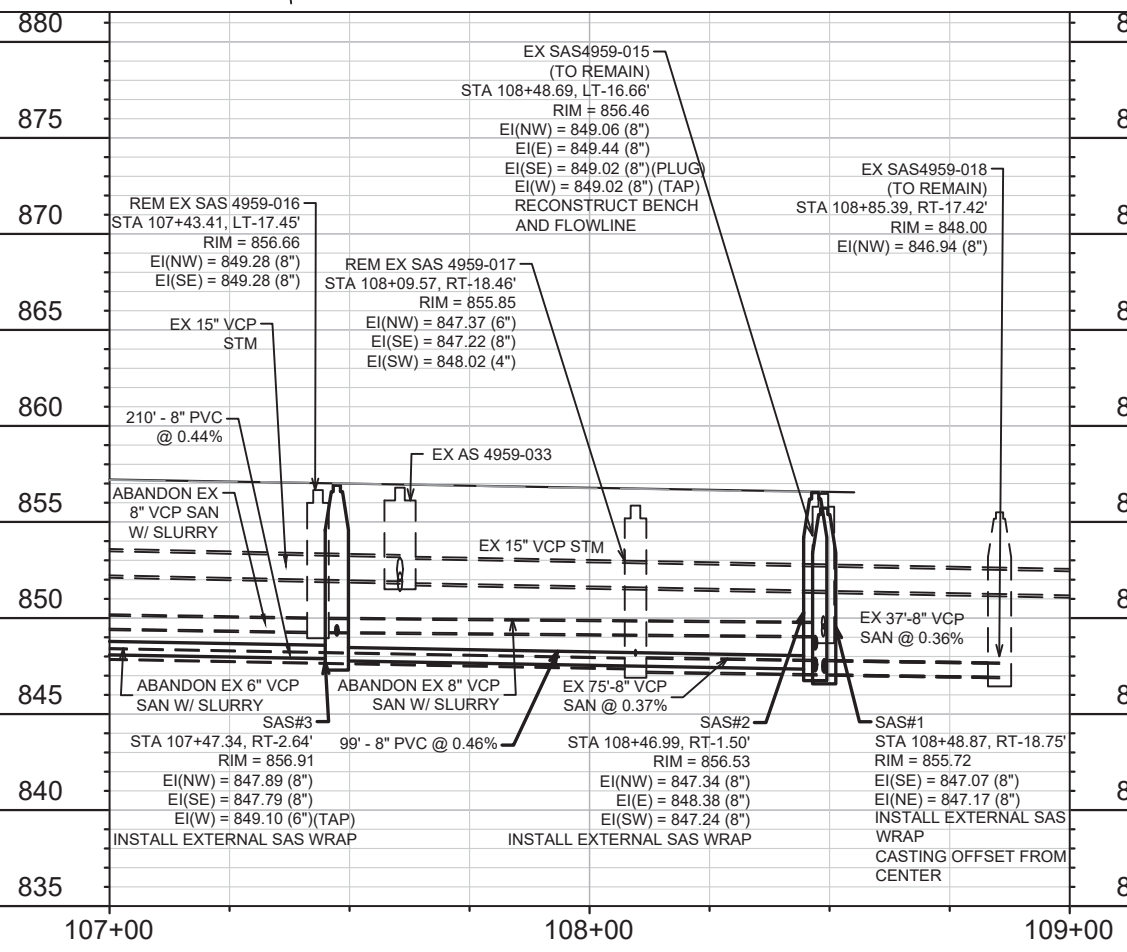
BELD STREET UTILITY PLAN AND PROFILE  
 SOUTH PARK STREET TO GILSON STREET  
 M:\DESIGN\Projects\11202\CAD\Storm\11202\_Sewers.dwg



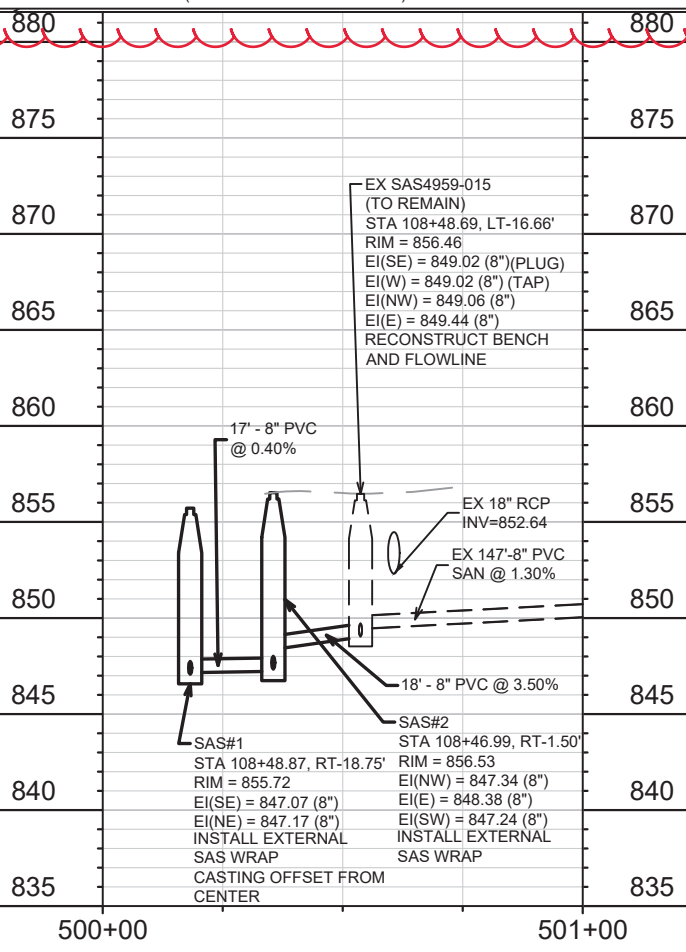
11202  
U-1



- NOTES**
1. AT CROSSINGS WITH WATER MAINS, WHERE SEWER OUTER DIAMETER (OD) TO WATER MAIN OD DISTANCE <18" PER SEWER DESIGN, CONTRACTOR TO INSTALL WATER MAIN VERTICAL OFFSET PER CITY OF MADISON S.D.D. 7.22.
  2. WHERE IT IS DETERMINED THAT WORK MUST BE PERFORMED ON CITY OF MADISON WATER MAIN, CONTRACTOR MUST CONTACT WATER UTILITY CONSTRUCTION SUPERVISOR JEFF BELSHAW (OFFICE: 608-261-9835, CELL: 608-206-3856) AT LEAST ONE WEEK PRIOR TO WORK.
  3. OUTSIDE STREET RECONSTRUCTION LIMITS, CONTRACTOR SHALL REM & REP SIDEWALK AND CURB AS NEEDED FOR SANITARY LATERALS (MAX OF 4 SW SQUARES & 20 LF CURB PER LATERAL, AS SHOWN IN DRAWING).
  4. TRENCH PATCH TYPE IV SHALL BE USED OVER ANY INSTALLED SEWER OUTSIDE OF STREET RECONSTRUCTION BOUNDARIES ON BELD ST (STA 106+37 TO STA 108+50).



**BELD STREET PROFILE**



**PINE STREET PROFILE**

MARK	ADDENDA 2	DATE	BY
DESIGNED BY	REVISION	DATE	BY
11202		01/18/22	LES
		11/14/2022	12:08 PM
		Scale: 1" = 40'	
			U-2

11202  
MADISON, WI  
CONTRACT NO: 8505

BELD STREET UTILITY PLAN AND PROFILE  
SOUTH PARK STREET TO GILSON STREET  
M:\DESIGN\Projects\11202\CAD\Storm\11202\_Sewers.dwg



11202  
U-2